

# MODEL T400



## HOPPER SHAPE KNIFE GATE VALVE

The model 400 is an unidirectional wafer monoblock valve designed for industrial general service. Mainly used in bulk handling applications, discharge of powders and solids.

The valve is normally installed in the reverse position (seat upstream) in order to avoid problems like build-up in valve body, seat wear, closing...

### Application fields such as:

- Bulk handling
- Cement plants
- Powerplants
- Chemical industry
- Mining
- Biomass

**Sizes:** DN 100 to DN 600 (Other sizes on request)

**Working pressure:** DN 100 to DN 250: 3 bar  
DN 300 to DN 400: 2 bar  
DN 500 to DN 600: 1 bar

**Standard flange connection:** EN1092 PN 10/16 (others on request)  
ANSI B16.5 (others on request)

### Directives:

- 2006/42/EC (machines)
- 2014/68/EU (PED). Fluid: Group 2 (Cat. I. mod. A)
- 2014/34/EU (ATEX) (contact sales department)

\* RAL 5015 blue coating on carbon steel components.  
(Specific RALs under demand)

\* All valves are tested according to UNE-EN 12266-1.

## DESIGN FEATURES

### Main features:

- Special desing of the body allows for easy passage of the fluid and makes it ideal for use as silo outlet valve.
- Flushing holes integrated on the body as standard. These purge ports allow internal cleaning of the valve and avoid solids trapping.
- Directional arrow in the body showing correct mounting position.

### Body:

- Made in one piece integral caste body in different materials A216WCB, CF8M, CF8, 654SMO, SAF2505, SAF2507, UB6 / 904L....

### Gate

- Stainless steel rectangular both sides polished gate to avoid seat damaging and lengthening packing durability.

### Seat:

- Many different seat configurations and sealing elements EPDM, NBR, Viton, Silicone, FDA silicone, PTFE, RPTFE, Graphite...

### Packing:

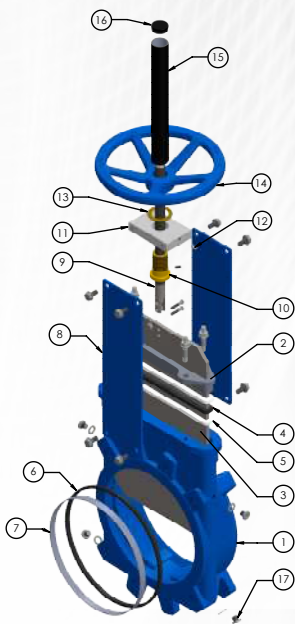
- High quality braided Synt+PTFE packing, other qualities such Pure PTFE or Graphite under specific demand.

- The valve is manufactured with different actuators such as: Manual (handwheel, gear box, chainwheel), double acting pneumatic, electric, hydraulic.

- Accessories: limit & inductive switches, solenoid valves, positioners.

## STANDARD PARTS LIST

Other materials under request depending on service conditions



Item	Part	Standard material	Stainless steel
1	Body	GJL250 (GG25), RAL 5015 coated	CF8M (AISI316)
2	Packing gland	Aluminium / Ductile Iron GGG	CF8M (AISI316)
3	Gate	AISI304L (1.4307)	AISI316L (1.4404)
4	O'ring	EPDM	EPDM
5	Packing	Synt+PTFE	Synt+PTFE
6	Seat	EPDM	EPDM
7	Sealing ring	AISI304L / AISI316L	AISI316L
8	Support plates	Steel, RAL 5015 coated	Steel, RAL 5015 coated
9	Spindle	AISI303 (1.4305)	AISI303 (1.4305)
10	Manouvering nut	Brass	Brass
11	Support bridge	Steel, Zinc coated	Steel, Zinc coated
12	Oiling greaser	Standard	Standard
13	Washer	Brass	Brass
14	Handwheel	GJL250 (GG25), RAL 5015 coated	GJL250 (GG25), RAL 5015 coated
15	Stem protection tube	Steel, cataphoresis RAL 9005	Steel, cataphoresis RAL 9005
16	Stem protection cover	Plastic	Plastic
17	Flushing plug	A2	A2
	Bolting	A2	A2

RVO - 02/2021

Zubi Reserves the right to change specifications without notice.

C/Hilanderas, 5 - Bajo | IRÚN | Guipúzcoa [Spain] · Tel: (+34) 943 63 52 71 · E-mail: zubi@valvulaszubi.com