

MODEL

T200 TAPPI



TAPPI KNIFE GATE VALVE

The model 200 TAPPI is a monoblock body design full bore "lugged" valve. Face to face dimensions and pressure rates according to MSS-SP-81 and TAPPI Tis 405-8. Available in unidirectional and bidirectional versions.

Application fields such as:

- Water & wastewater treatment plants
- Powerplants
- Chemical industry
- Mining
- Biomass
- Paper pulp
- Bulk handling

Sizes: DN 50 to DN 600 (Bigger sizes on request)

Working pressure: DN 50 to DN 600: 10 bar

Standard flange connection: EN1092 PN 10/16 (others on request)
ANSI B16.5 (others on request)

Directives:

- 2006/42/EC (machines)
- 2014/68/EU (PED). Fluid: Group 1(b), 2 (Cat. I. mod. A)
- 2014/34/EU (ATEX) (contact sales department)

* RAL 5015 blue coating on cast iron and carbon steel components. (Specific RALs under demand)

* All valves are tested according to UNE-EN 12266-1.

DESIGN FEATURES

Main features:

Body:

- One piece monoblock body design in different materials GG, GGG40/50, CF8M, CF8, 654SMO, SAF2505, SAF 2507, UB6 / 904L...
- Pressure direction is shown with an imprinted arrow on the valve body.
- Internal cast gate wedges and guides allows optimum tightness.

Gate

- Stainless steel both sides polished gate to avoid seat damaging and lengthening packing durability.

Seat:

Many different quality of sealing elements EPDM, NBR, Viton, Silicone, FDA silicone, PTFE, RPTFE, Graphite, Flucast...

Packing:

High quality braided Synt+PTFE packing, other qualities such Pure PTFE or Graphite under specific demand.

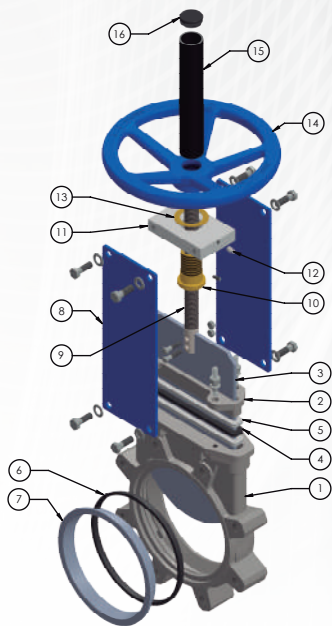
·The valve is manufactured with different actuators such as:

Manual (handwheel, gear box, lever, chainwheel), pneumatic (single and double acting), electric, hydraulic.

·Accessories: limit & inductive switches, locking devices, solenoid valves, positioners and stem extensions.

STANDARD PARTS LIST

Other materials under request depending on service conditions



Item	Part	Standard material	Stainless steel
1	Body	GJL250 (GG25), RAL 5015 coated	CF8M (AISI316)
2	Packing gland	Aluminium / Ductile Iron GGG	CF8M (AISI316)
3	Gate	AISI304L (1.4307)	AISI316L (1.4404)
4	O'ring	EPDM	EPDM
5	Packing	Synt+PTFE	Synt+PTFE
6	Seat	EPDM	EPDM
7	Reinforced ring	AISI304L / AISI316L	AISI316L
8	Support plates	Steel, RAL 5015 coated	Steel, RAL 5015 coated
9	Spindle	AISI303 (1.4305)	AISI303 (1.4305)
10	Manouvering nut	Brass	Brass
11	Support bridge	Steel, Zinc coated	Steel, Zinc coated
12	Oiling greaser	Standard	Standard
13	Washer	Brass	Brass
14	Handwheel	GJL250 (GG25), RAL 5015 coated	GJL250 (GG25), RAL 5015 coated
15	Stem protection tube	Steel, cataphoresis RAL 9005	Steel, cataphoresis RAL 9005
16	Stem protection cover	Plastic	Plastic
	Bolting	A2	A2

RVO - 03/2021

Zubi Reserves the right to change specifications without notice.

C/Hilanderas, 5 - Bajo | IRÚN | Guipúzcoa [Spain] · Tel: (+34) 943 63 52 71 · E-mail: zubi@valvulaszubi.com

www.valvulaszubi.com